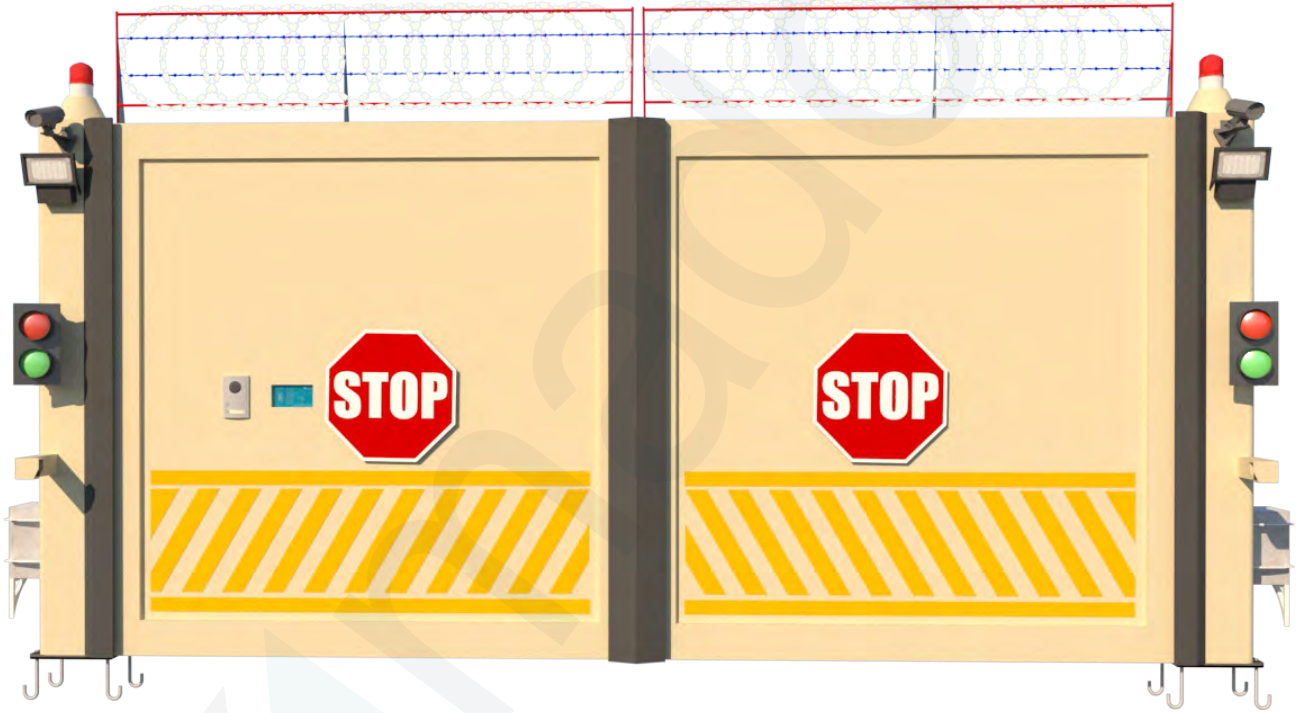


BP-SWD-500 SERIES
DATA SHEET



Adres : Saray Mahallesi / Atom Caddesi / Küme Evleri No : 155 Kahramankazan ANKARA / TÜRKİYE

www.madoors.com.tr e-mail : info@madoors.com.tr Tel : 00 90 312 354 64 22 Mobil Tel : 00 90 530 174 30 56



Bullet-Proof Automatic Motorized Swing Gates and Doors

Madoors UI752 Level 8 or FB3-FB4-FB5-FB6-FB7 Level Ballistic Bullet Proof Gates are multi-purpose access doors available in a variety of finishes and are ideal for external or internal use in any setting requiring protection against the probability of an armed attack. MAdoors bullet proof BP-SWG-500 swing operated gates offer the solution. Consist of single and double leaves options.

MAdoors bullet proof BP-SWG-500 series swing gates are designed for military, commercial and industrial applications. The swing gate is a suitable application to close the entrances completely. Height and width can be varied according to site requirements. Optima swing gates opera

The drive unit is hydraulic, but in case of power failure bullet resistant swing gate can be opened or closed manually with the help of hand pump. With the help of controlled electronics, raise/lower function can be achieved by every kind of card readers, biometric readers like fingerprint or hand shape, radio control, on/off key switch etc. Besides, safety accessories like photocells, inductive loop detectors, flashing lights or red/green lights can be integrated to the system.

Motorized Bullet proof resistant gate are high-security doors with a solid bullet resistant material core on a steel sub-frame. All our products are produced from milux 500 ballistic steel and have a 2-year warranty.

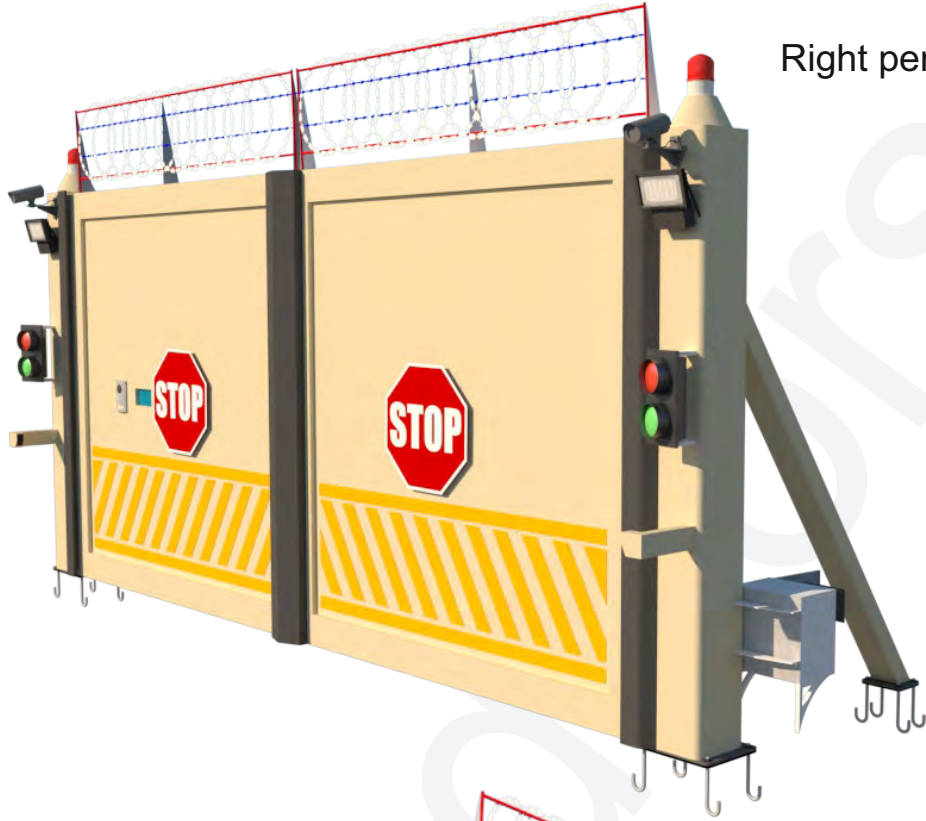
Adres : Saray Mahallesi / Atom Caddesi / Küme Evleri No : 155 Kahramankazan ANKARA / TÜRKİYE

www.madoors.com.tr e-mail : info@madoors.com.tr Tel : 00 90 312 354 64 22 Mobil Tel : 00 90 530 174 30 56



Views;

Right perspective view



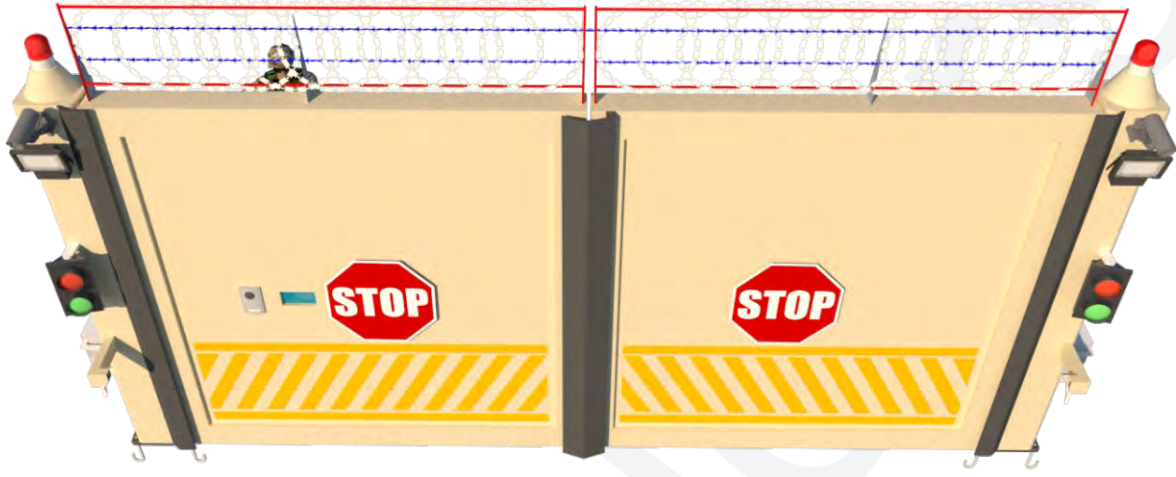
Left perspective view

Adres : Saray Mahallesi / Atom Caddesi / Küme Evleri No : 155 Kahramankazan ANKARA / TÜRKİYE

www.madoors.com.tr e-mail : info@madoors.com.tr Tel : 00 90 312 354 64 22 Mobil Tel : 00 90 530 174 30 56



Views;



Double Leaf Close View



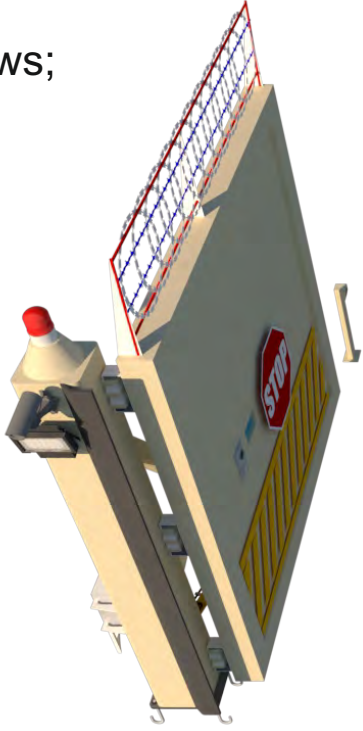
Right Leaf Open View

Adres : Saray Mahallesi / Atom Caddesi / Küme Evleri No : 155 Kahramankazan ANKARA / TÜRKİYE

www.madoors.com.tr e-mail : info@madoors.com.tr Tel : 00 90 312 354 64 22 Mobil Tel : 00 90 530 174 30 56



Views;



Left Leaf Open View



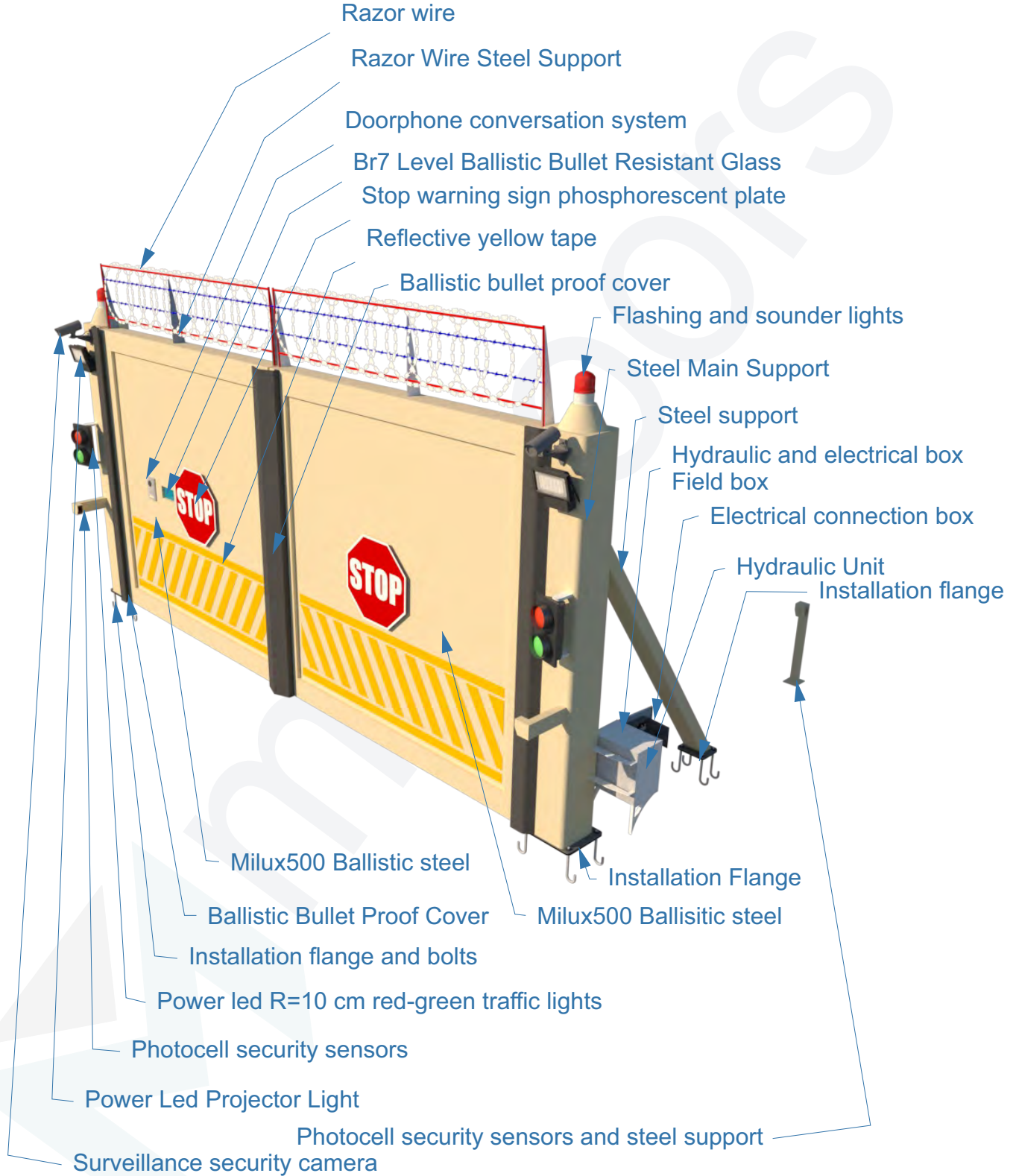
Double Leaf Open View

Adres : Saray Mahallesi / Atom Caddesi / Küme Evleri No : 155 Kahramankazan ANKARA / TÜRKİYE

www.madoors.com.tr e-mail : info@madoors.com.tr Tel : 00 90 312 354 64 22 Mobil Tel : 00 90 530 174 30 56



Parts;

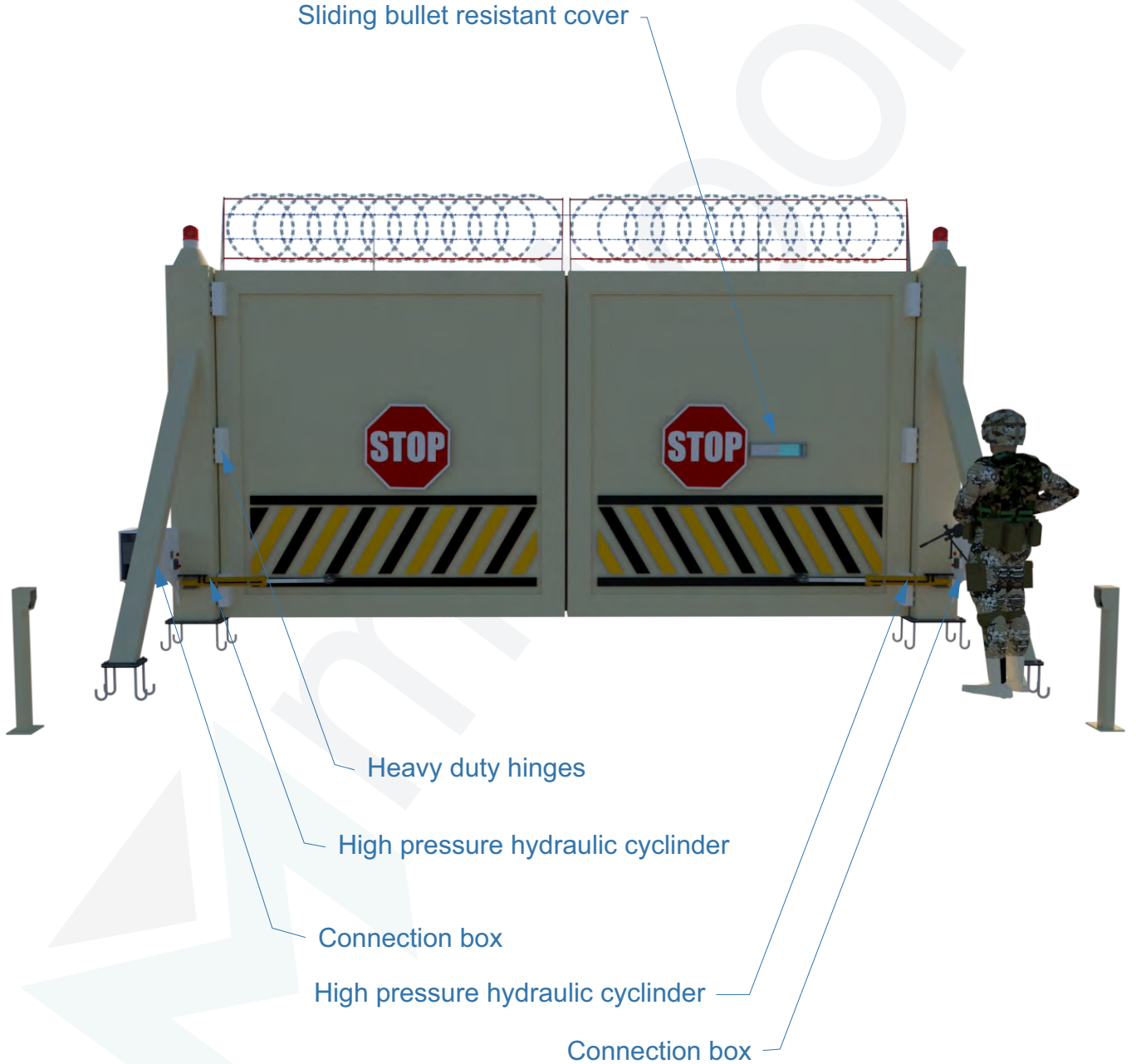


Adres : Saray Mahallesi / Atom Caddesi / Küme Evleri No : 155 Kahramankazan ANKARA / TÜRKİYE

www.madoors.com.tr e-mail : info@madoors.com.tr Tel : 00 90 312 354 64 22 Mobil Tel : 00 90 530 174 30 56



Parts;



Adres : Saray Mahallesi / Atom Caddesi / Küme Evleri No : 155 Kahramankazan ANKARA / TÜRKİYE

www.madoors.com.tr e-mail : info@madoors.com.tr Tel : 00 90 312 354 64 22 Mobil Tel : 00 90 530 174 30 56



Working voltage	380 volt Ac. 50-60 hz. 220 volt Ac. 50-60 hz.
Power	1,1 kw 2,2 kw
Photocell sensors	Yes / Two Sets / 12-24 volt dc.
Loop dedector	Yes / Optionally / 12-24 volt dc.
PLC and Software	Yes
Traffic lights	Yes / 220 volt ac./12 volt dc. Red-Green Power Led R=10 cm
Warning Sign	Yes / R=60 cm Reflective tape / 5 years warranty
Warning Lights	12 volt dc. Yellow color and 40 db. sounder
Remote control button and receiver card	2 channel remote controller button and 2 channel receiver card
Electrical connection box	IP 67 siemens electrical components 30x40x15 cm
Field box	Electro-static powder / Grey / St52 Steel / Lock / Ip65 / 70x70x80 cm
Working tempeture	-50 celcius / +65 celcius
Oil	35 number oil
Manual woring hand pump	Yes

Adres : Saray Mahallesi / Atom Caddesi / Küme Evleri **No :** 155 Kahramankazan ANKARA / **TÜRKİYE**

www.madoors.com.tr e-mail : info@madoors.com.tr **Tel :** 00 90 312 354 64 22 **Mobil Tel :** 00 90 530 174 30 56



Spare Parts

Motor Description ;

Electric motor siemens 4 Kw 1500 Rpm 230/400V

SIEMENS



Hydraulic unit



Hydraulic Piston



Hydraulic Solenoid Valve



Hydraulic Manual Open-Close Hand Pump



Adres : Saray Mahallesi / Atom Caddesi / Küme Evleri No : 155 Kahramankazan ANKARA / TÜRKİYE

www.madoors.com.tr e-mail : info@madoors.com.tr Tel : 00 90 312 354 64 22 Mobil Tel : 00 90 530 174 30 56



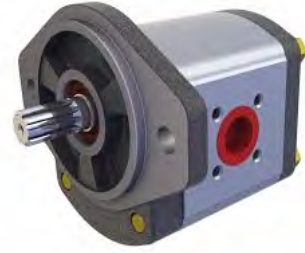
Hydraulic Oil Level and Oil Tempetaure Scale



Hydraulic Oil Pressure Scale



Hydraulic Pump



Hydraulic Pipe (R2 / 280 bar normal - 330 bar maximum)



Hydraulic Oil 46 Number



Adres : Saray Mahallesi / Atom Caddesi / Küme Evleri No : 155 Kahramankazan ANKARA / TÜRKİYE

www.madoors.com.tr e-mail : info@madoors.com.tr Tel : 00 90 312 354 64 22 Mobil Tel : 00 90 530 174 30 56



Siemens W-3 Fase Fuse



Barrier open-close level limit switch

Telemecanique
Sensors



PLC Controller Unit and Software



Siemens Contactor for 4 kw / 3 fase motor



Siemens Motor Safety Termics



Adres : Saray Mahallesi / Atom Caddesi / Küme Evleri No : 155 Kahramankazan ANKARA / TÜRKİYE

www.madoors.com.tr e-mail : info@madoors.com.tr Tel : 00 90 312 354 64 22 Mobil Tel : 00 90 530 174 30 56



Photocell Security Sensors



Traffic Light (220 volt. Ac. 100 mm.)



Remote Control Button 2 Channel



Power 220 volt / 24 volt. DC.



Electric Horn and Lamb (220 volt AC.)



Adres : Saray Mahallesi / Atom Caddesi / Küme Evleri No : 155 Kahramankazan ANKARA / TÜRKİYE

www.madoors.com.tr e-mail : info@madoors.com.tr Tel : 00 90 312 354 64 22 Mobil Tel : 00 90 530 174 30 56



Hydraulic control box

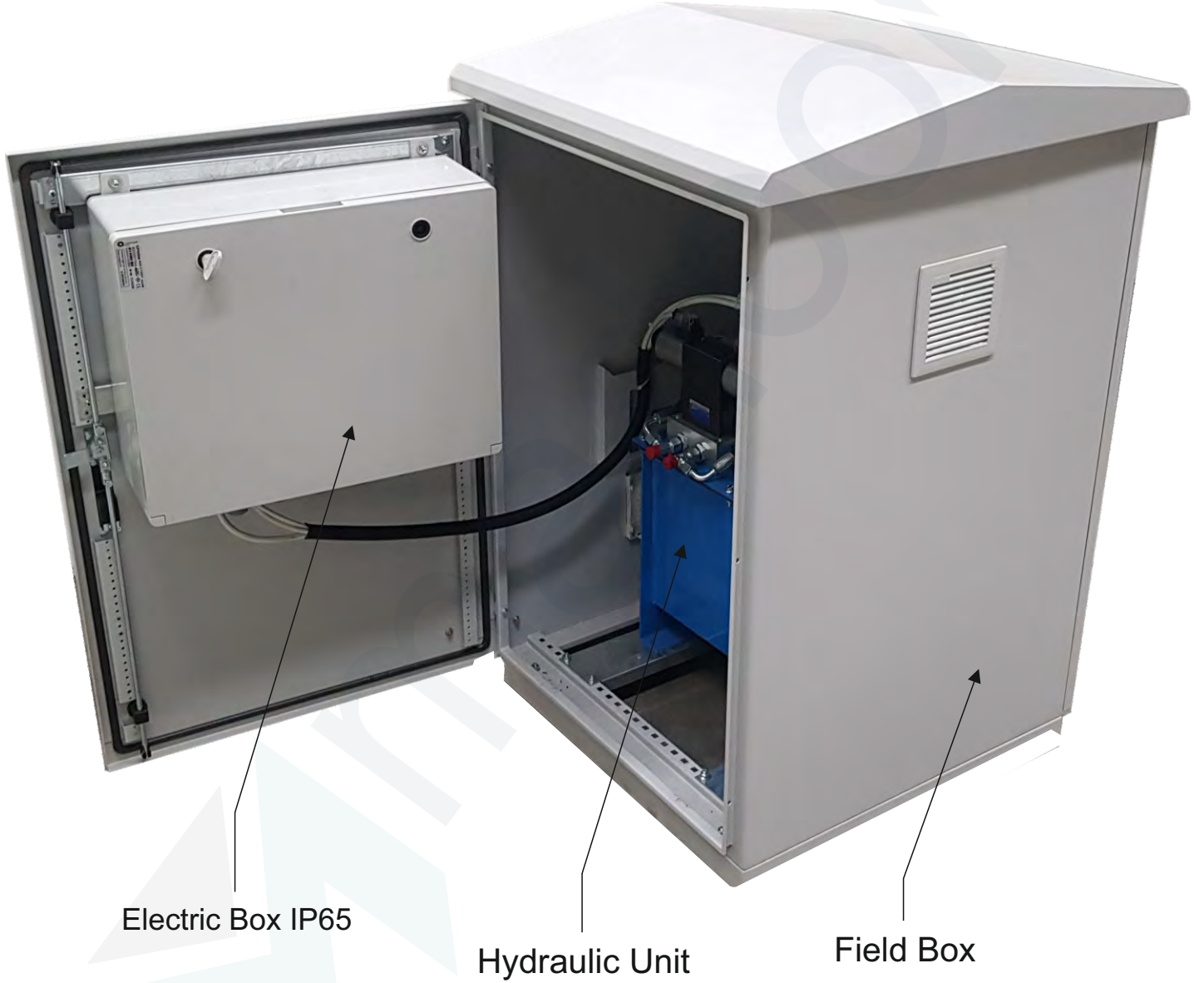


Adres : Saray Mahallesi / Atom Caddesi / Küme Evleri **No :** 155 Kahramankazan ANKARA / TÜRKİYE

www.madoors.com.tr **e-mail :** info@madoors.com.tr **Tel :** 00 90 312 354 64 22 **Mobil Tel :** 00 90 530 174 30 56



Hydraulic control box



Adres : Saray Mahallesi / Atom Caddesi / Küme Evleri No : 155 Kahramankazan ANKARA / TÜRKİYE

www.madoors.com.tr e-mail : info@madoors.com.tr Tel : 00 90 312 354 64 22 Mobil Tel : 00 90 530 174 30 56



Hydraulic control box lock



Push to button



Turn to arm

Adres : Saray Mahallesi / Atom Caddesi / Küme Evleri No : 155 Kahramankazan ANKARA / TÜRKİYE

www.madoors.com.tr e-mail : info@madoors.com.tr Tel : 00 90 312 354 64 22 Mobil Tel : 00 90 530 174 30 56



Electrical Box



Adres : Saray Mahallesi / Atom Caddesi / Küme Evleri **No :** 155 Kahramankazan ANKARA / **TÜRKİYE**

www.madoors.com.tr **e-mail :** info@madoors.com.tr **Tel :** 00 90 312 354 64 22 **Mobil Tel :** 00 90 530 174 30 56



Electrical Box



Adres : Saray Mahallesi / Atom Caddesi / Küme Evleri No : 155 Kahramankazan ANKARA / TÜRKİYE

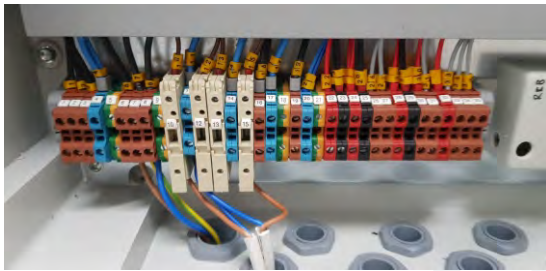
www.madoors.com.tr e-mail : info@madoors.com.tr Tel : 00 90 312 354 64 22 Mobil Tel : 00 90 530 174 30 56



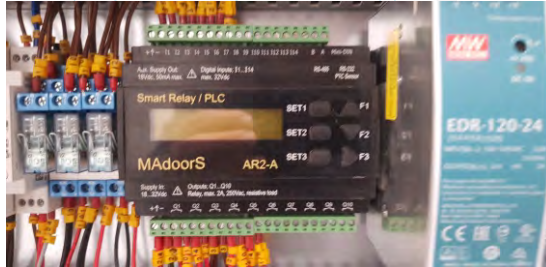
Electrical Box



1. Cable connection terminals



2. PLC (programmable logical control relay)



3. Remote control cart



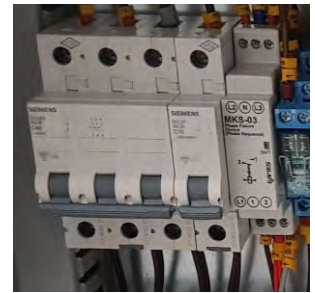
4. Contactor and motor safety relay



6. Phase safety relay



5. Fuse



7. Relays



Adres : Saray Mahallesi / Atom Caddesi / Küme Evleri No : 155 Kahramankazan ANKARA / TÜRKİYE

www.madoors.com.tr e-mail : info@madoors.com.tr Tel : 00 90 312 354 64 22 Mobil Tel : 00 90 530 174 30 56

